

Häfele Duomatic 94°

For refrigerator doors



5

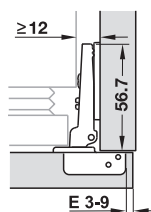


> Extremely flat design specially for refrigerator door applications



- > Material: Steel cup and hinge arm
- > Finish: Nickel plated
- > Installation: Door to cabinet with slide-on system using Duomatic A mounting plates
- > Drilling depth: Hinge cup 11 mm
- > Adjustment facility: Side adjustment up to +4.5 mm, height adjustment from -2 to +2 mm, depth adjustment with Duomatic A mounting plates +2.8 mm
- > With automatic closing spring
- > Drilling pattern 45/9.5 on request

→ Full overlay mounting



Door overlay mm																			
7	8	9	10	11	12	13	14	15	16	17	18	19	20	21					
									3	4	5	6	7	8	0				
						3	4	5	6	7	8					3			
			3	4	5	6	7	8								6			
3	4	5	6	7	8											9			
Distance to cup E mm								Mounting plate distance mm											



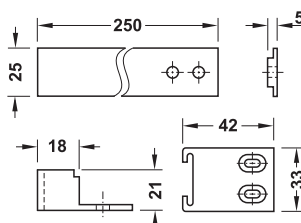
Cup fixing	Drilling pattern 48/6	Drilling pattern 52/5.5
For screw fixing	329.36.601	329.36.641

Packing: 1 or 50 pieces

Order reference

Only suitable for all Duomatic A mounting plates

Connecting fitting for appliance doors



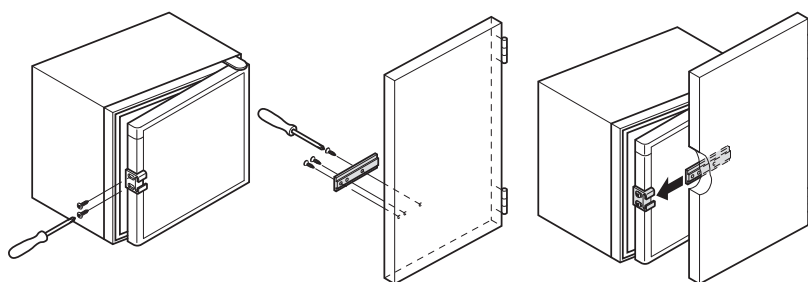
- > Area of application: For built-in refrigerators behind furniture doors, the refrigerator door opens automatically when the furniture door is opened
- > Material: Plastic
- > Supplied with: Fixing material

Colour	Cat. No.
Guide: White, rail: Black	568.16.020

Packing: 1 piece

Installation

- > Screw guide to the outside of the refrigerator door.
- > Open refrigerator door by 90°.
- > Slide rail into guide.
- > Screw rail horizontally onto the inside of the furniture door.



Drilling patterns/technical information	► MB 5.6
Mounting plates and accessories	► MB 5.44
Smove soft closing system for doors	► MB 5.58